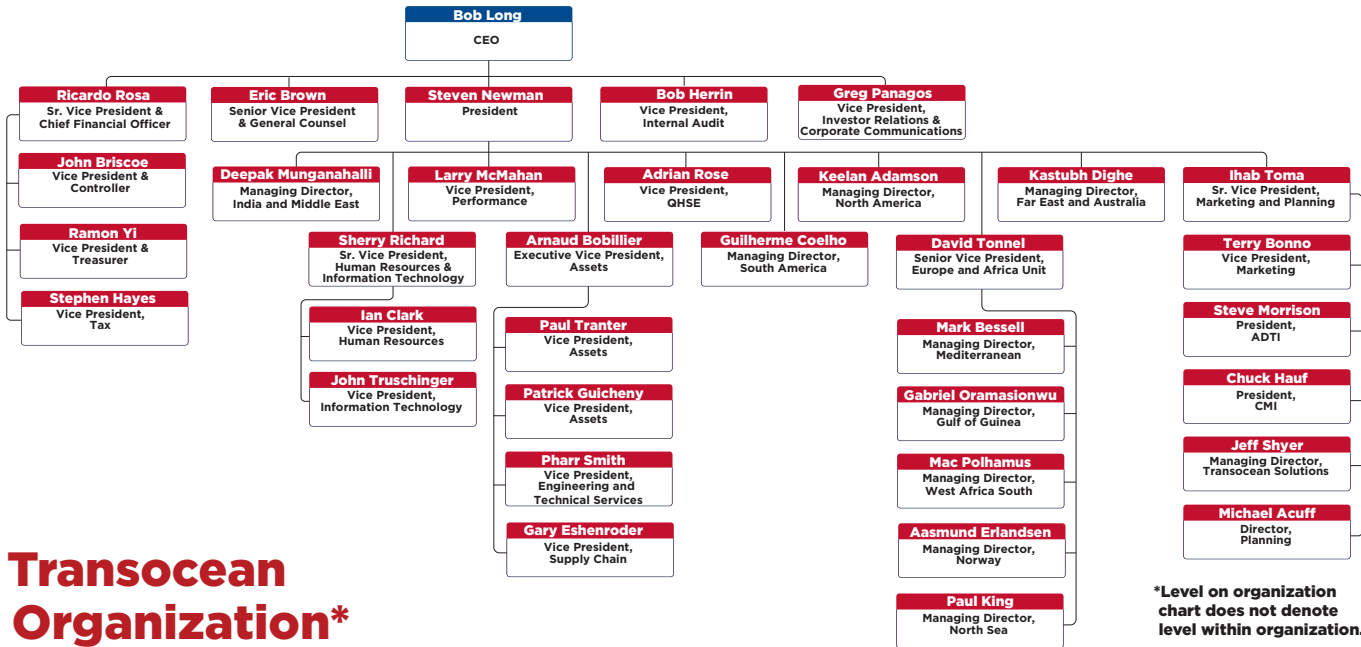


# Transocean Organization\*

Some major changes were made to Transocean's organization this fall, with the company's Americas and Asia/Pacific Business Units phased out. Here's an updated organization chart for the management team, which you can find at *FIRST Online* (<http://first.rigemployees.com>).



\*Level on organization chart does not denote level within organization.

Looking for someone? The Transocean Employee Directory is the best place to find contact info for company employees and locations. TED is accessible via the company's intranet ([www.rigcentral.com](http://www.rigcentral.com)) or at <http://ted.deepwater.com> ... you can even get there on company mobile devices.